



# HILDEBRAND

- automatic snowchains -

**rota**  
**chain**®



*We give you traction!*



# IN WINTER – THE DIFFICULTIES



## Winter challenges for trucks

Winter not only brings with it magical snowy landscapes, but also dangerous driving situations. Snowy slopes in particular can become insurmountable obstacles. Starting off in snow is difficult, which can affect transport efficiency and reliability. Conventional snow chains designed for such situations often prove cumbersome to use, which can then lead to costly delays when necessary and present companies with logistical challenges. This is particularly true in system-relevant fields such as fire brigades/rescue services, where quick reactions are essential and every second is crucial for everyone to save lives.



## ROTACHAIN - THE SOLUTION FOR TRACTION

With our Rotachain automatic snowchain, we offer you a way out of this problem and a safer ride in the frosty seasons.

With just the push of a button in the cab, you can switch Rotachain on or off - whether from a standstill or while driving, forward or backward. When activated, the chainwheels are guided to the side of the tire and are thus driven according to the bicycle dynamo principle. The chain strands, in turn, are

lifted by the centrifugal forces and are thrown under the wheels to provide the necessary traction within a few seconds. When Rotachain is no longer needed, simply turn it off at low speed. Our automatic snowchains not only serve as a starting aid, but can also be used at speeds of up to 50 km/h.

Effortless to use and efficient!



# QUALITY AND SERVICE



## Rotachain – proven many times!

Our Rotachain system is extremely reliable, is used in a wide range of industries and is an excellent additional equipment for a wide range of vehicles. No matter whether fire engines, ambulances, municipal vehicles, winter service or commercial vehicles in local and long-distance transport. It is suitable for both light (from 3.5 tons) and heavy commercial vehicles.

The adaptability of the components used also enables uncomplicated and quick retrofitting of almost all commercial vehicles. Through development and production in-house, we ensure continuous control and quality monitoring. You also benefit from our high level of flexibility and, of course, from the shortest routes throughout the entire process.

Over 30 years of experience are reflected in Rotachain's technology and quality and through constant adaptation and improvement to current vehicle types, we are always up to date with the latest technology.

Take advantage of this opportunity, focus on safety and mobility and make your vehicle winter-proof!

## PRESENT IN THESE COMMERCIAL VEHICLES:

DAF • ISUZU • IVECO • MAN • MERCEDES BENZ • MITSUBISHI FUSO •  
MULTICAR • RENAULT • SCANIA • UNIMOG • VOLVO

### Karl Hildebrand GmbH

📍 Bessemerstrasse 9  
D-40699 Erkrath  
☎ +49-(0)2104/9379-0  
📠 +49-(0)2104/9379-820  
🌐 [www.rotachain.com](http://www.rotachain.com)  
✉ [info@rotachain.com](mailto:info@rotachain.com)



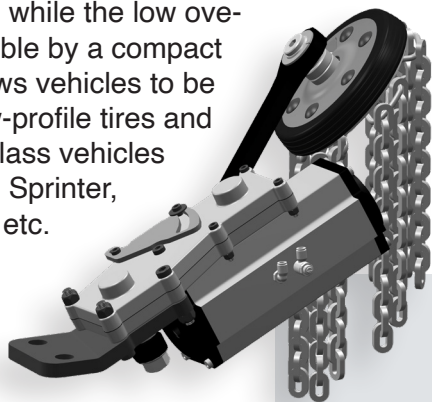


# A READY TO INSTALL KIT

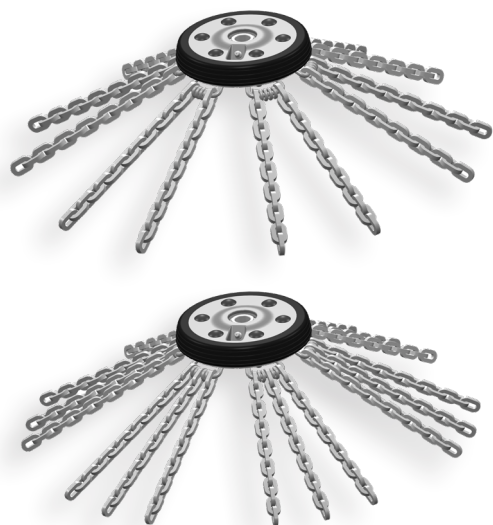
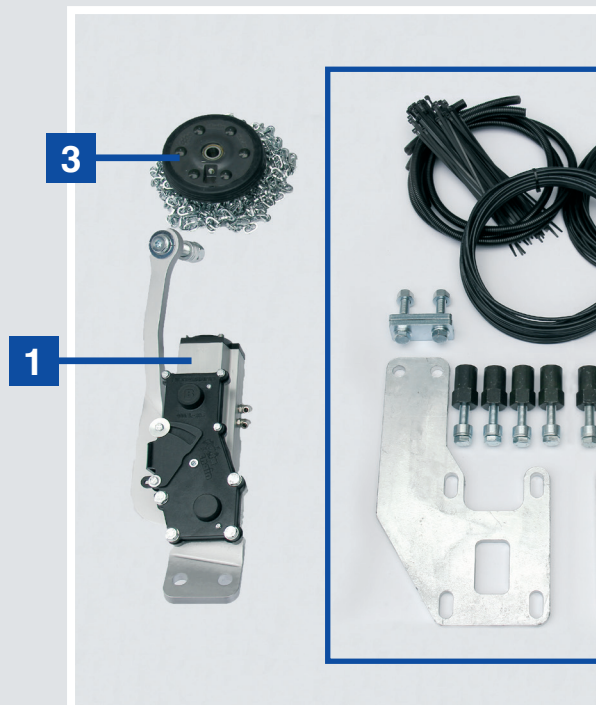


## 1 DRIVE UNIT

Our Rotachain drive unit impresses with a robust rotary drive that can withstand even the strongest environmental influences. The corrosion-proof encapsulation ensures a long service life, while the low overall height is made possible by a compact design. This design allows vehicles to be easily equipped with low-profile tires and is also suitable for van class vehicles such as Mercedes-Benz Sprinter, Iveco Daily, VW Crafter, etc.



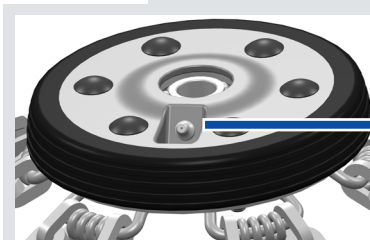
## EXAMPLE OF A ROTACHAIN KIT



## 3 CHAINWHEEL SET

Our Rotachain chainwheel set is available in two versions - with 12 or 18 strand chainwheel, perfectly tailored to different purposes and tire sizes. It consists of extremely robust chain strands and individually replaceable chain plates.

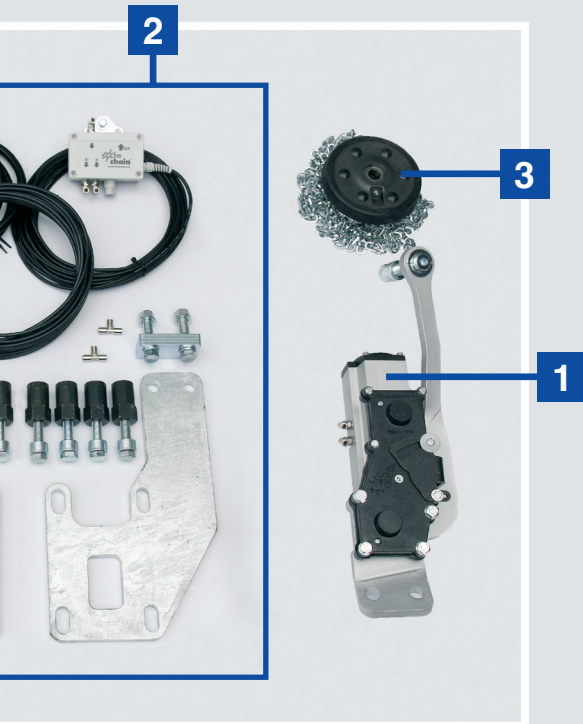
An outstanding feature is the possibility of lubricating the bearings using an integrated grease nipple, which ensures easy maintenance and a long service life. The ball bearings, which are pre-greased at the factory, ensure optimal function without any additional effort.



GREASE NIPPLE



# QUICK AND EASY ASSEMBLY



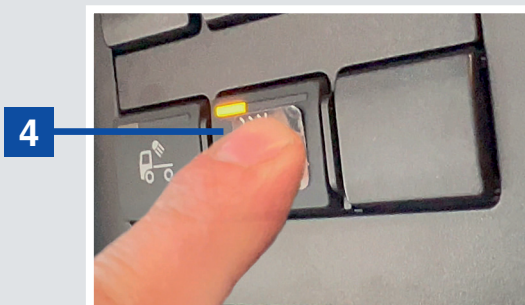
## 2 BRACKET KIT

Our bracket kits offer the highest quality and durability. Thanks to high-quality materials and effective corrosion protection, we guarantee stability and a long service life in every area of use. Installation is effortless thanks to precisely fitting, vehicle-specific installation parts and our bracket kits contain additional components such as air hoses, cables and valve box. Detailed colored instructions also ensure smooth installation!

The innovative ball joint, which is integrated in the arm, ensures optimal adjustment of the chainwheel to the tires. With a stepless adjustment in the range of  $\pm 12^\circ$ , it offers maximum adjustment options. The ultra-flat design ensures improved space, while installation is quick and uncomplicated.



## BALL JOINT



## 4 SWITCH

With every Rotachain system you will receive an original OEM switch corresponding to the design of the dashboard. We provide a detailed circuit diagram and the necessary connection pins for each switch.



# THE COMPRESSOR SET



## ROTACHAIN AIRBOX

As since Rotachain is a pneumatically operated system, the Rotachain-AIRBOX was specially developed - a compressor set for light commercial vehicles (up to 7.49 tons) without their own compressed air supply.

The set includes a compressor box with integrated pressure control and a valve box. An air tank is also included, equipped with a safety valve and a drain cock for condensation.

The floating suspension of the compressor ensures low-noise and low-vibration per-

formance, while the box also offers splash protection.

The external attachment to the chassis is carried out using vehicle-specific brackets, which ensure quick and easy installation. Detailed instructions are included to make the installation process easier.

This solution enables uncomplicated integration to enable light commercial vehicles to be equipped with Rotachain.

## EXAMPLE INSTALLATION ON MERCEDES-BENZ SPRINTER 906/907:



## HAVE WE AROUSED YOUR INTEREST?

In order to be able to create an offer, we need various vehicle data from you.  
To do this, use our online/PDF form or contact us directly by email or telephone.  
Our team will process your inquiry at shortly and you will receive a non-binding offer.

**INQUIRY FORM**   
**SCAN THE QR CODE OF YOUR CHOICE HERE:**



# THE LITTLE HELPER



## WHAT IS ROTACHAIN ASSIST?

Rotachain-ASSIST is available as an optional module and adds an innovative control unit to your vehicle that supports the driver by only allowing Rotachain to be activated and deactivated in specific speed ranges. It carries out targeted monitoring tasks that warn the driver both visually and acoustically of improper use and thus prevent damage to the vehicle or Rotachain.

Thanks to its simple and quick setup and universal speed evaluation, the Rotachain-ASSIST is versatile and fits a variety of different vehicle types.



## THE MAIN ISSUE!

The biggest problem is that unintentional activation at a speed of over 50 km/h can cause major damage to the automatic snowchains and the vehicle. With Rotachain-ASSIST this is no longer possible as this action is not permitted by the device!

## MAXIMUM 50KM/H!!

If the driver exceeds the 50km/h limit with the automatic snowchains switched on, Rotachain-ASSIST will give a warning signal to inform the driver. The system remains active to maintain the necessary traction.

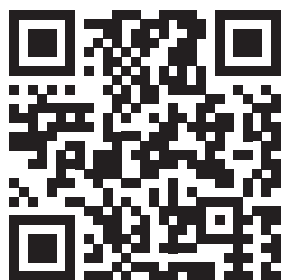


## ✓ AT LEAST WALKING SPEED!

You can easily park on the chains so that you can drive away later to maintain traction. Since you cannot retract the automatic snowchains while stationary, Rotachain-ASSIST only allows deactivation if you are driving at least walking speed. Switching on is permitted both when stationary and while driving.

## ✓ SLEEP MODE

Automatic snowchains are not needed in summer. Accordingly, Rotachain-ASSIST can put the system into sleep mode so that use is completely disabled.



ONLINE-ENQUIRY



PDF-REQUEST

### KONTAKT:

Karl Hildebrand GmbH

📍 Bessemerstrasse 9  
D-40699 Erkrath

☎ +49-(0)2104/9379-0

☎ +49-(0)2104/9379-820

🌐 [www.rotachain.com](http://www.rotachain.com)

✉ [info@rotachain.com](mailto:info@rotachain.com)





## QUALITÄTSMANAGEMENT ISO 9001:2015



We regard the promotion of our employees' sense of responsibility and quality awareness as an essential task. In this way we aim to give our customers the certainty that they can trust the expertise and reliability of Karl Hildebrand GmbH with all offers from our range of products and services.

In order to implement our corporate guidelines and to achieve the goals we have set ourselves, Karl Hildebrand GmbH has introduced a process and customer-oriented management system based on the DIN EN ISO 9001:2015 standard. However, the management system can only be beneficial if it applied meaningfully

to the special needs of the company and if necessary adapted to the individual requirements.

To that extent the aim is not to run a rigid, prefabricated management system, but rather a system that is tailored optimally to the interests of all customers and interested parties as well as all employees within the framework of uniform, meaningful rules.



✓ hinges

✓ locks

✓ pillars

✓ automatic snowchains

✓ custom parts

✓ *since 1905*

**HILDEBRAND**

Karl Hildebrand GmbH  
Bessemerstrasse 9  
D-40699 Erkrath  
Germany

+49-(0)2104/9379-0  
+49-(0)2104/9379-820  
[www.karlhildebrand.de](http://www.karlhildebrand.de)  
[info@karlhildebrand.de](mailto:info@karlhildebrand.de)